



STEEL PIPES / STEEL STRUCTURES



Product and Services Catalogue

Experts in the business

I Table of contents

04	About the company
08	Longitudinal and spiral welded steel pipes
09	Seamless steel pipes
10	Insulated steel pipes
11	Steel twin pipes
12	Steel pipes coiled from sheet metal
13	Used steel pipes
14	Painting steel pipes inside and outside
15	Resin-glass laminate coatings on pipes
16	Welding and installation of steel pipelines
17	Decommissioning of steel pipelines
18	CNC Plasma Cutting – CNC sheet metal burning
19	Production of bridge supports
20	Production of pipe struts
21	Piles and COMBIWALL pipe wall panels
22	Production of segmented elbows
23	Production of industrial chimneys
24	Production of steel tanks
25	Steel structures
26	Contact



Our customers include end users of steel pipes as well as other distributors of steel products.

About the company

Eco-Tech is a team of professionals, who for 12 years have been offering proven solutions in response to the needs of a dynamically changing market. Meeting the needs of our customers and constantly developing cooperation with the market, we have become not only a direct importer and distributor, but also one of the largest stockists of steel pipes in Poland.

We connect across generations - this is the motto that all Ecotech employees follow. We are a family company. That's why relationships are most important to us. Not only with customers and suppliers but also within the organization. Thanks to the values that guide us on each of these levels, we have built a strong position in just over a decade, and we want to further strengthen it by caring of relationships with our partners.

Szymon Wiewiórowski
CEO

We mainly serve clients from industries such as:

- construction
- engineering
- hydro-engineering
- chemical
- mining
- automotive
- energy

Manufacture and assembly of steel structures

The company's continued growth meant that in 2016 it expanded its activities to include the fabrication and assembly of steel structures. Our production capacity today is approximately 300 tonnes per month, which allows us to provide full service and complex order processing for the supply of steel pipes together with their prefabrication and the production of steel structures.

Geographical range extends to the whole of Poland and the EU

Our knowledge of the Polish and global steel industry enables our company to provide the most sophisticated products in terms of their type and applications.



About the company

12 years'

Experience in the implementation of steel pipe deliveries on the Polish and foreign markets

The experience gained during this time translates into professional order handling and professional advice in the selection of products for our customers.

8 000 tonnes

Of steel pipes in stock at our customers' disposal

We offer a wide range of seamed and seamless steel pipes, including brand-new structural, carrier, pressure, gas and casing pipes as well as pipes from disassembly.

3 500 orders

Completed in 2021

Our staff is responsible for the implementation of orders. Starting from the design department through production, warehouse to logistics, sales and management. Our staff currently consists of more than 40 people.

1 200 products

Available off-the-shelf

We stock 1200 sizes of seamless and welded steel pipes in warehouses located in Warsaw and Trzemeszno. This allows us to provide comprehensive and fast delivery of orders.

The construction plant with the capacity of 300 tonnes per month

The construction plant allows us to provide a full service and comprehensive processing of orders of steel pipes, including their prefabrication and production of steel structures.

Logistics - own fleet of vehicles

Thanks to our own vehicle fleet, we offer effective logistics solutions that allow us to deliver ordered goods to any place in Poland and abroad. The warehouses often work in the two-shift system, ensuring implementation in the shortest possible time.

Quality management

We work according to the Quality Management System that has been certified in accordance with PN-EN ISO 9001:2008 by Det Norske Veritas. ISO 9001 certification confirms the high level of organisation of internal processes and ensures that our customers' needs are met efficiently.



PN- EN ISO 9001



PN-EN ISO 9010 EXC2



PN- EN ISO 3834

Comprehensive order processing

In many cases, order processing by our wholesaler of steel pipes in Warsaw is possible right away. This is all due to the fact that we keep a minimum of 8 000 tonnes of steel pipes in stock at all times. We also guarantee fast processing of orders that require us to import products.

Longitudinal and spiral welded steel pipes



We offer longitudinal and spiral welded steel pipes in the diameter range: \varnothing 159 to 2420 mm

Production range of longitudinal and spiral welded pipes:

pipes in the range of external diameters from \varnothing 159 mm to 2420 mm

wall thicknesses up to 40 mm

pipe lengths from 6 m to 24 m

basic types of tube steel from production: S235JRH, S275JOH, S275J2H, S275NLH, S355JOH, S355J2H,

Production of pipes according to standards:

welded cold-formed structural pipes according to EN 10219-1,2: 2007

structural hot-formed welded pipes according to EN 10210-1,2: 2007

welded line pipes of non-alloy steel according to EN 10217-1:2002

electrically welded non-alloy steel boiler pipes according to EN 10217-2: 2004

welded non-alloy steel boiler pipes made by submerged arc welding according to EN 10217-5: 2004

Seamless steel pipes



Seamless steel pipes, i.a. structural, casing, conductive, precision and boiler pipes. In diameters ranging from \varnothing 48.3 mm to 508 mm and wall thicknesses from 3.6 mm to 36 mm

We manufacture to standards:

Steel grades:

PN-EN 10208-1 L210GA, L235GA, L245GA, L290GA, L360GA

PN-EN 10208-2 L245NB, L290NB, L360NB

PN-EN 10210-1,2 S235JRH, S275JOH, S275J2H, S355JOH, S355J2H, S275NH, S275NLH, S355NH, S355NLH

PN-EN 10216-1 P195TR1, P195TR2, P235TR1, P235TR2, P265TR1, P265TR2

PN-EN 10216-3 P275NL1, P275NL2, P355N, P355NH, P355NL1, P355NL2

PN-EN 10216-4 P215NL, P265NL

PN-EN 10297-1 E235, E275, E315, E355, C22E, C35E, C45E, C10E, C15E, C15R

PN-EN 39 S235GT

PN-EN 10255 S195T

PN-EN 10224 L235, L275, L355

PN-H-74219 R35, R45, R55, R65, 10, 20, 35, 45 18G2A

DIN 1629 St. 37.0, St. 44.0, St. 52.0

DIN 1630 St. 37.4, St. 44.4, St. 52.4

Insulated steel pipes

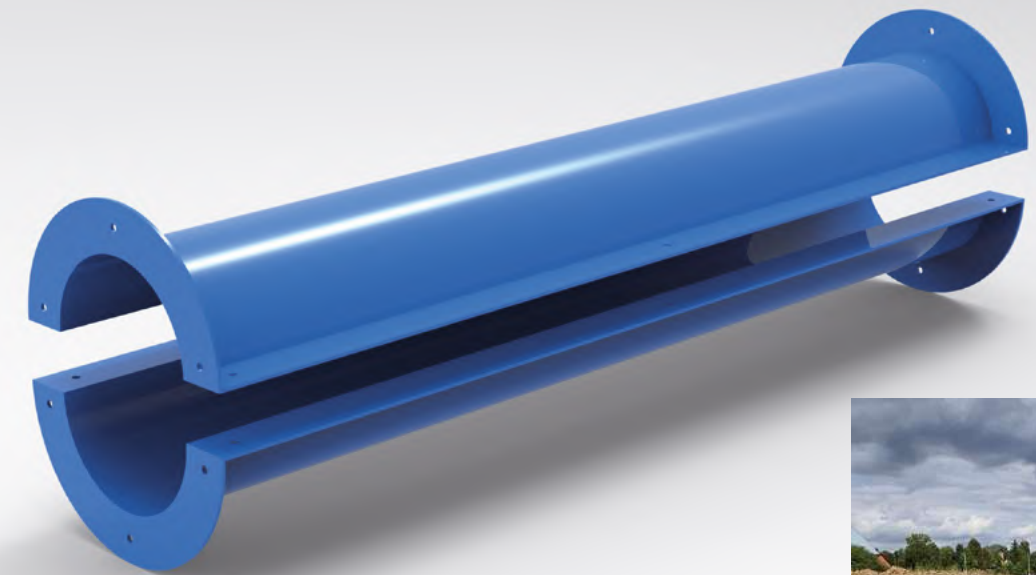


Insulation types available – corrosion protection on pipes

- three-layer polyethylene insulation – 3LPE according to DIN 30670
- three-layer polypropylene insulation – 3LPP according to DIN 30678
- single-layer epoxy insulation – FBE according to DIN 30671
- bituminous insulation: ZO-1, ZO-2, ZO-3, ZM, WM, WW
- external anti-corrosion coatings SYNERGY insulation class A50, B50, C50 Standard PN-EN 12 068:2002
- polyurethane internal and external insulations on pipes, execution standard PN-EN ISO 12944; PN-EN 15655:2009 and PN-EN 10290

We provide insulation services for steel pipes according to EN 12068-2002 and DIN 30672

Steel twin pipes



We offer steel twin pipes in a range of diameters from \varnothing 114 mm to 2600 mm. Wall thickness range from 4.5 mm to 24 mm

We manufacture twin pipes from any welded steel type, e.g. S235, S275, S355, S420, S460.

We protect pipes against corrosion by application of polyurethane and epoxy spray coatings.

We also provide a steel twin pipes installation service for underground installations starting with the design, production and installation of the twin pipes as well as earthworks.



Steel pipes coiled from sheet metal

Pipes coiled from sheet metal with diameters from \varnothing 355 mm to 3600 mm and wall thickness range from 6 mm to 36 mm.

Production range of pipes coiled from sheet metal

pipes in diameter from \varnothing 355 mm to 3600 mm

cold-rolled steel pipes from \varnothing 6 mm to 36 mm

sections' lengths as ordered, welded: 2,000 mm - 16,000 mm

steel types in production: S235JRH, S275JOH, S275J2H, S275NLH, S355JOH, S355J2H, S355NH, S355NLH, S420NH, S420NLH, S460NH, S460NLH P235GH, P265GH, P295GH, P355GH, 16Mo3

Production according to standards: pipe coiling according to standards PN EN 10219-1, PN EN 10219-2, PN EN 10217-1, PN 79H-74244

Declaration of conformity for the product: Atest 3.1. na materiał, badania UT i VT

Used steel pipes

Our sales offer includes used pipes in the diameter ranges from \varnothing 159 mm to 1620 mm and a wall thickness range from 4.5 mm to 20 mm, which allows us to complete even the most demanding orders.

Steel pipes from disassembly - application

- culverts / drillings / jackings under road and rail embankments
- for support
- for piling the area
- as temporary pipelines
- as casing pipes

Used steel pipes are often an alternative to brand new pipes, which is particularly worth considering for less demanding projects. Due to the careful selection of the materials we source for our stock, we guarantee the high quality of the goods on offer.

The purchase of steel pipes from disassembly can lead to, for example, the optimisation of investment costs due to the purchase of pipes for less demanding projects.



Painting steel pipes inside and outside



Categories of atmospheric corrosivity:

- C1** – very low corrosivity
- C2** – low corrosivity
- C3** – medium corrosivity
- C4** – high corrosivity
- C5** – very high corrosivity

Water and soil corrosivity categories:

- Im 1** – fresh water
- Im 2** – salt water
- Im 3** – soil

Range of pipe diameters for external painting: from Ø 88.9 mm to 3200 mm

Range of pipe diameters for internal painting: from Ø 159 mm to 3200 mm

Pipe length: up to 24 m

Coating thickness and other parameters according to standards and design requirements

We paint with epoxy and polyurethane coatings, zinc paints, ethyl silicates and topcoats in the full range of RAL colours.

Laminate coatings on steel pipes

We provide the service of laminating steel pipes in cooperation with a proven foreign partner that has decades of experience in the resin-glass coating market.

Available options:

- coating thickness or other types of resin can be specified according to the customer's requirements
- different colours of the coating on request
- UV resistance of the surface protective layer is optional on request
- it is possible to make integrated GRP distance skids permanently bonded, with a laminate system on request
- welded joint protection performed by qualified company employees, if necessary

The system of coatings made of resin-glass laminate is one of the most durable types of coatings available for the external mechanical protection of pipelines.

It can be used as a layer of mechanical protection layer for anti-corrosion coatings of pipelines and welded joints, such as polyethylene (PE), polypropylene (PP), coatings made of epoxy resins (FBE) and protected with polyurethane (PU).



Resin-glass laminate coatings are specifically designed for use in trenchless pipeline installation technologies such as:

- Horizontalne przewiertki sterowane (HDD)
- Mikrotuneling
- Direct Pipe®
- Metoda przecisku
- Technologia Pipe Express®

Welding and installation of steel pipelines



The range of services includes:

- industrial pipelines
- chemical installations
- compressed air and control equipment installations
- refrigerated water systems
- fire protection systems
- central heating systems
- welding of steel, water, steam, fuel and stainless steel pipelines
- installation of preinsulated pipes

We weld with TIG, MIG, MAG and electrode methods.
We specialise in welding and assembly works.
We offer our services nationwide and abroad.

We have our welds quality approved by the Office of Technical Inspection. Services are performed at the highest level in accordance with safety and fire regulations.

Decommissioning of steel pipelines

We offer steel pipeline decommissioning services

Eco-Tech has specialised in decommissioning steel pipelines for years. We have had the opportunity to carry out several dozen decommissioning operations and our clients included, among others, such recognisable brands as Lotos, Pern and Zakłady Energetyki Ciepłej.

Eco-Tech provides

- decommissioning of industrial pipelines
- decommissioning of heating pipelines
- decommissioning of gas pipelines
- decommissioning of district heating lines



We perform, as a general contractor, comprehensive demolition work of buildings of all purposes and structures such as:

- large buildings – boiler houses, halls industrial buildings, office buildings
- above-ground engineering structures – footbridges, chimneys, viaducts, railway sidings
- surface and underwater engineering structures in cooperation with diving teams and vessels

At Eco-Tech, we own all the necessary equipment to dismantle steel pipelines easily, quickly and safely. We are able to dismantle pipelines with diameters from Ø 159 mm to 2020 mm.

■ CNC Plasma Cutting CNC sheet metal burning



Advantages of plasma cutting

- fully automated cutting process
- speed of cutting – cutting machines
- optimisation of material processing costs
- high cutting quality for smooth edges
- minimal loss of material
- recurrence of elements
- precision and possibility of working at many angles

Possibilities

- Max. sheet length: 12000 mm
- Max. sheet width: 2000 mm
- Max. cutting thickness: 150 mm
- Material burning: 3D

Our machine is equipped with a 2000 mm x 12000 mm table and enables both plasma and traditional gas torch cutting. We perform plasma cutting services on black steel, stainless steel and aluminium.

Qualified staff and professional software allow us to make efficient use of the cut material and to quickly process the orders, while maintaining the highest quality standards.

■ Production of bridge supports



Adapted to work under difficult conditions

They are highly durable and suitable for use in difficult weather conditions and under heavy loads. They are designed to carry heavy loads at considerable heights.

Eco-Tech products undergo numerous tests, which guarantee their excellent quality and safe use for many years.

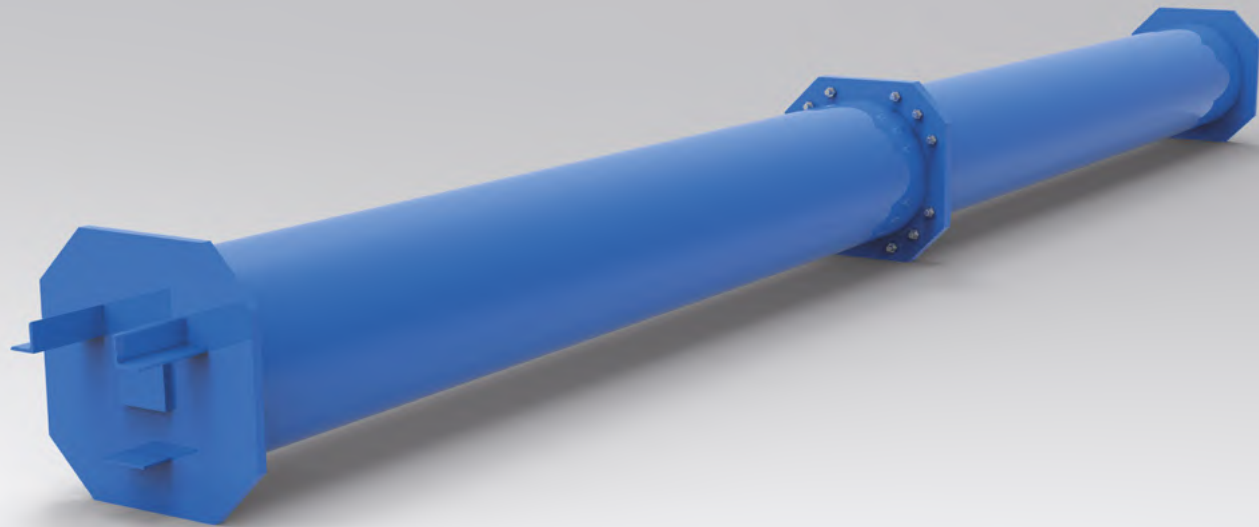


The best materials guarantee durability of bridge supports

We create supports that fully meet the needs of our customers and comply with all safety requirements of European standards.

We use the best materials, which guarantee their durability and high resistance to damage.

Production of Pipe struts



We pay a great deal of attention to ensure that the pipe struts we produce are highly durable. In order to do so, we select suitable steel grades for the production of pipe struts and subject our products to numerous strength tests.

All of this ensures that you receive products of **the highest quality**, the use of which ensures a **high level of safety** during construction.

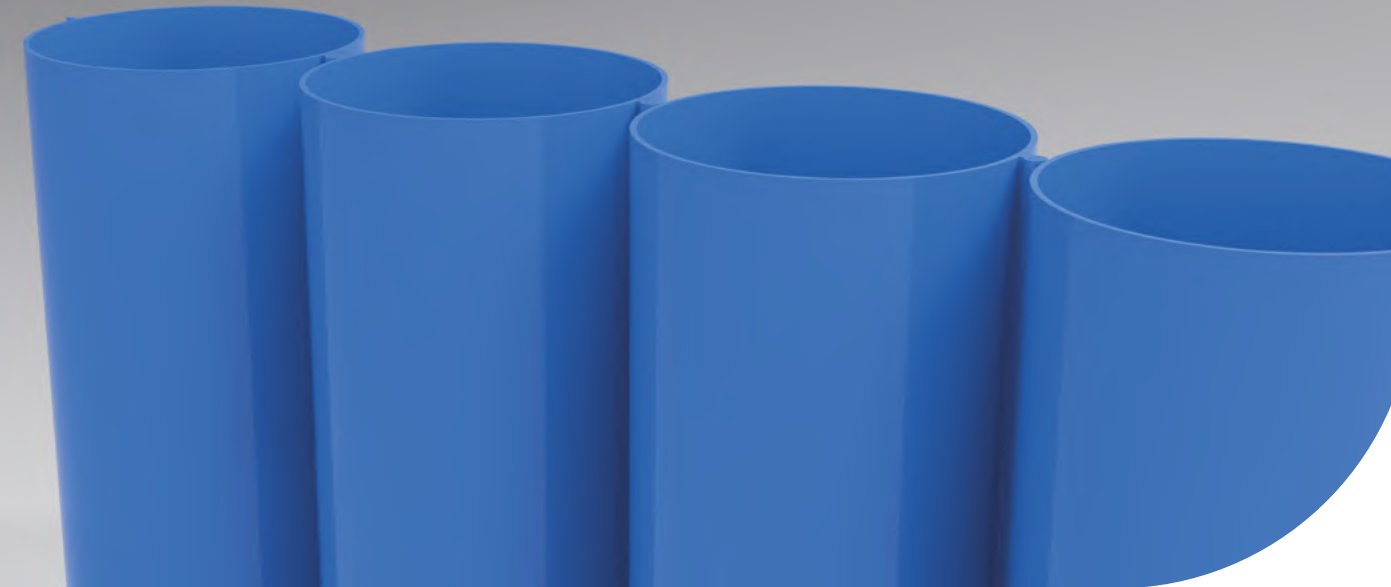
Investments requiring deep excavation in urban areas or their immediate vicinity require specialised solutions.

Tunnels, semi-tunnels, retaining walls, underground car parks or buildings with multiple underground floors are very often constructed in dense urban areas.



The advantages of strut excavation include, primarily, the low cost of construction as well as easy and quick installation of the struts, and the possibility of repeated use of the struts in various projects. In addition, the work is limited solely to the perimeter of the excavation.

Piles and COMBIWALL pipe wall panels

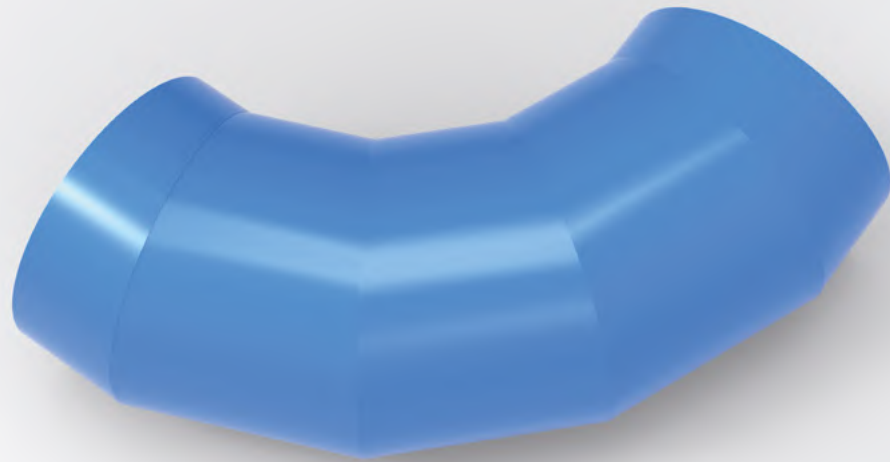


The production range of piles and COMBIWALL pipe wall panels from \varnothing 406 mm to 1420 mm in diameter and up to 24 mb in length.

The pipe piles available from Eco-Tech are solid products, designed to last a long time. They are perfect for preventing landslides. Due to the fact that our production range consists of piles of various weights and sizes, you will be able to select products to suit specific project requirements with ease.



Production of segmented elbows



We offer segmented elbows tailored to the needs of our client

Our offer includes segmented elbows, with diameters ranging from \varnothing 323.9 mm to 3200 mm and wall thicknesses from 4 mm to 40 mm, which we customise to the individual character of each order. Our products include segmented elbows with various bending radii. Our excellent knowledge base and equipment help us achieve really good results. In addition, we use only top-class components and materials.

Elbows are made of sheet metal:

- structural
- stainless
- acid-resistant
- rust-resistant
- heat-resistant
- boiler materials



Production of industrial chimneys

Industrial steel chimneys

For the construction of chimneys, we use steel pipes in a range of diameters from \varnothing 219 mm to 1620 mm. We are a distributor and producer of pipes with diameters difficult to access from \varnothing 1600 mm to 3600 mm. We guarantee fast delivery and very attractive terms of cooperation.

We also produce: chimney fittings, flues, chimney bases, flanges

- free-standing chimneys
- built-in chimneys
- smoke chimneys
- flue gas chimneys
- ventilation chimneys
- exhaust chimneys
- steel chimneys
- single-layer chimneys – single wall
- multi-layer chimneys – double wall
- internal chimneys
- external chimneys
- industrial chimneys

Steel chimneys production range

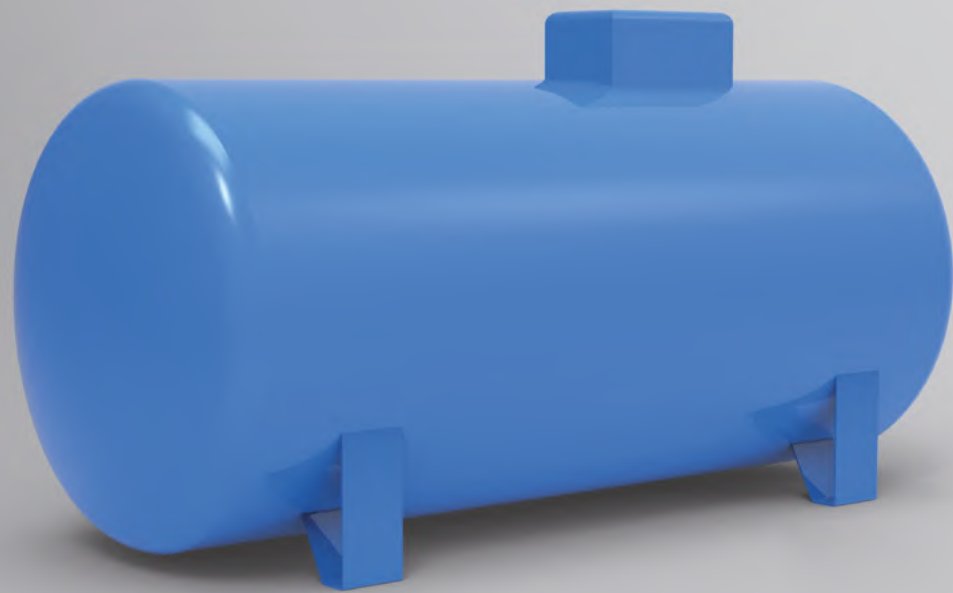
The production of industrial chimneys is an offer aimed at, for example, wastewater treatment plants, power plants, industrial bakeries, but also companies operating in the automotive, food or paper industries.



Installation of steel chimneys

In addition to design and production, we also offer full installation service for steel chimneys which allows us to provide complex service to our customers.

Production of steel tanks



We produce steel tanks according to technical specifications

We are able to produce steel tanks of any size, fully adapted to the customer's needs and meeting all the technical specifications provided by the customer.



We offer:

- silos
- steel open tanks
- closed steel tanks
- storage tanks
- industrial tanks
- pressure tanks
- underground tanks
- steel drums
- mobile silos
- stationary silos
- municipal waste tanks
- industrial waste tanks
- tanks for segregated waste
- water tanks
- slurry tanks
- gas tanks
- fire tanks

Steel structures

We produce specialised steel structures:

- design, construction and assembly of halls, carports
- painting of steel elements
- production and assembly of acoustic screens
- metal containers
- railings and handrails
- silos
- concrete forms for the construction industry
- masts and transmitters
- gratings
- roof bracing, girders, embedded steel plates
- components for the automobile industry

We provide services in:

- laser cutting of pipes and 3D profile shapes
- sheet metal bending and rolling
- milling
- MIG/MAG/TIG welding of black steel, structural steel, aluminium and stainless steel
- turning
- sheet metal stamping
- spray and powder coating
- sandblasting, shot-blasting of surfaces
- locksmith services
- assembling of structures, industrial lines, parts packaging



Eco-Tech Sp. z o.o. builder of steel constructions, welded parts, parts for machines, components for production lines, components and subassemblies for the construction industry

Contact us

We are available from Monday to Friday from 8.00 a.m. to 4.00 p.m.



Tomasz Sikora
Commercial Director
✉ tomek@ecotechgroup.pl
☎ +48 515 772 087



Justyna Jurek
Team Manager
✉ justyna@ecotechgroup.pl
☎ +48 519 739 420



Kamil Owczarek
Trade Specialist
✉ kamil@ecotechgroup.pl
☎ +48 503 081 891



Aleksandra Lis
Trade Specialist
✉ aleksandra@ecotechgroup.pl
☎ +48 570 558 888



Aleksandra Pasik
Trade Specialist
✉ aleksandra.pasik@ecotechgroup.pl
☎ +48 519 739 436



Michał Pilarczyk
Trade Specialist
✉ michal@ecotechgroup.pl
☎ +48 506 902 126



Krzysztof Śluzek
Export Manager
✉ krzysztof@ecotechgroup.pl
☎ +48 504 347 960



Hanna Kalusok
Foreign Trade Specialist
✉ hanna.kalusok@ecotechgroup.pl
☎ +48 503 082 320



Anna Mitulska
Steel Constructions
✉ anna.mitulska@ecotechgroup.pl
☎ +48 607 075 162



Wiktor Milewski
Logistics / Transport
✉ logistyka@ecotechgroup.pl
☎ 503 081 642



Aneta Czechońska
Accounting
✉ aneta@ecotechgroup.pl
☎ +48 506 902 222



Tomasz Polak
Chief Operational Officer
✉ tomasz.polak@ecotechgroup.pl
☎ +48 537 807 888



Anna Wiewiórska
Administrative Director
✉ anna@ecotechgroup.pl



Mateusz Wiewiórowski
General Manager
✉ mateusz@ecotechgroup.pl
☎ +48 690 090 949



Szymon Wiewiórowski
CEO
✉ szymon@ecotechgroup.pl



Eco-Tech is a rapidly growing company and a reliable and proven partner. Our growing capabilities and our priority of continuous progress allowed us to currently accumulate the stock of more than 8,500 tons of steel pipes.

It's all thanks to fruitful cooperation with manufacturers and the trust of our customers - their satisfaction makes it possible to increase orders and build our position in the market. Together with experience and expanding our competence, we can offer to our customers extremely competitive prices and attractive delivery terms.



The logo consists of a stylized white icon of a pair of glasses with a circular lens and a curved frame, positioned to the left of the text. The text "EcoTech" is written in a large, white, sans-serif font, with the "E" and "T" being significantly larger than the other letters. A registered trademark symbol (®) is located at the top right of the text.

EcoTech[®]